

# greater dandenong neighbourhood character study



client:  
Greater Dandenong City Council

project team:  
hansen partnership

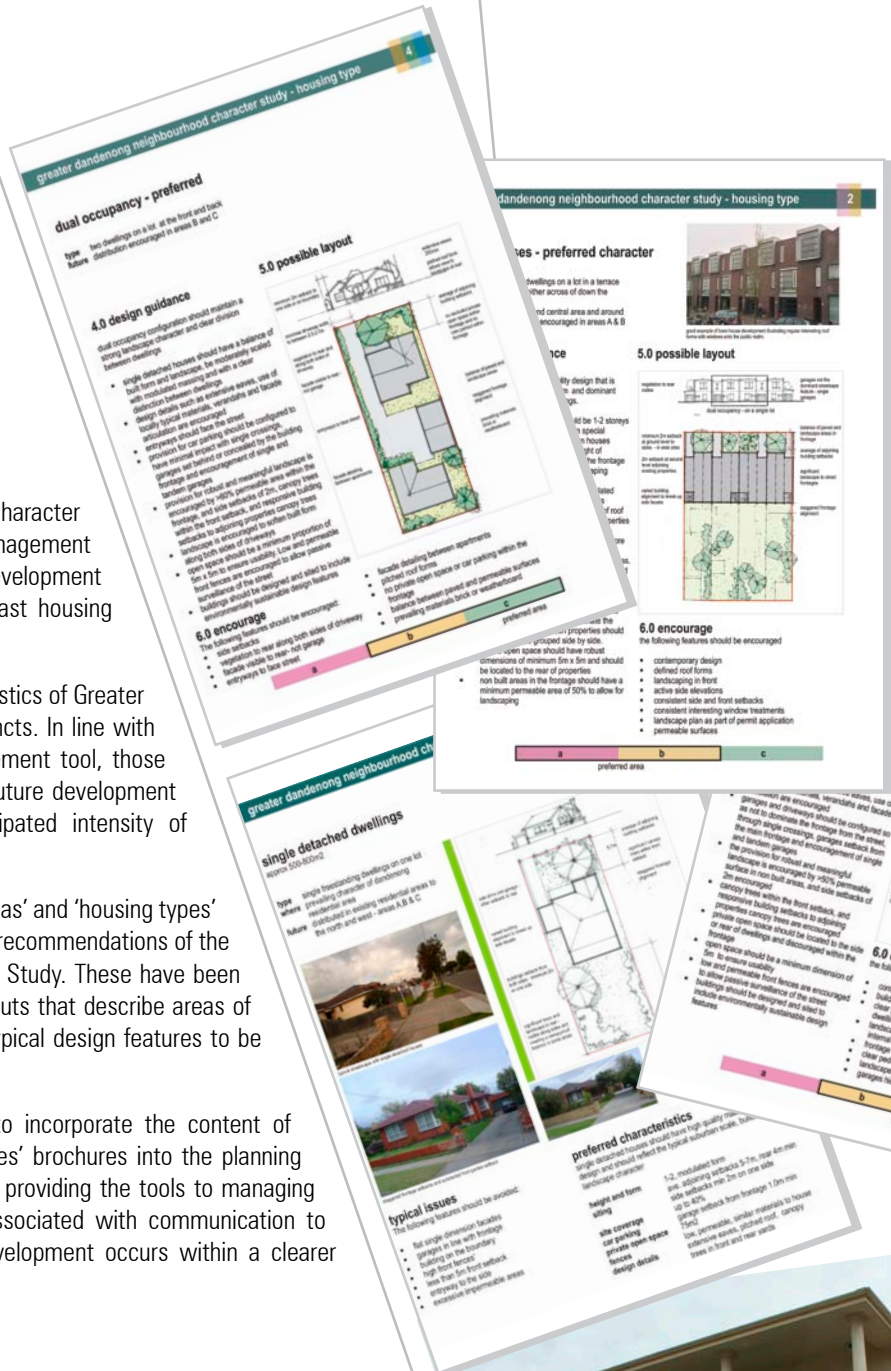
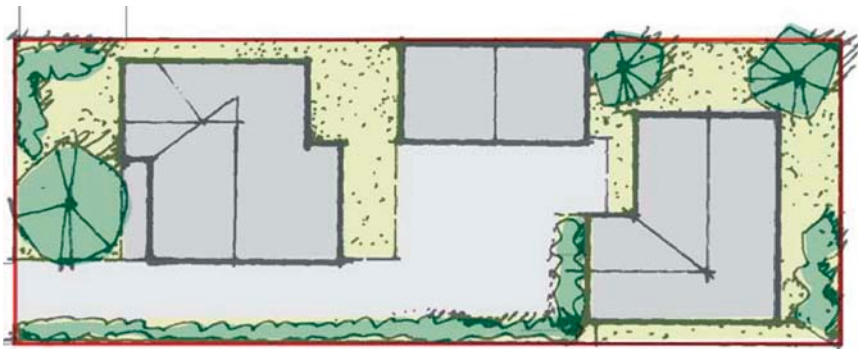
## project description:

The Greater Dandenong Neighbourhood Character Study was commissioned to assist in the management of existing neighbourhood character and development change arising from the municipality's forecast housing growth.

This study documented the existing characteristics of Greater Dandenong, and identified 15 definable precincts. In line with the study's aim to provide a simple management tool, those character areas were then simplified into 3 future development areas, each of which relates to an anticipated intensity of redevelopment.

The output of the study of 'future character areas' and 'housing types' brochures form the essence of the built form recommendations of the Greater Dandenong Neighbourhood Character Study. These have been designed as user friendly, brochure style lift outs that describe areas of intensity of redevelopment, and link this to typical design features to be encouraged.

The final recommendation of the study is to incorporate the content of the 'future character areas' and 'building types' brochures into the planning scheme. This is the final and critical stage in providing the tools to managing better design. However it must also be associated with communication to decision makers and developers so that development occurs within a clearer framework for quality design.



urban planning urban design landscape architecture

hansen partnership pty ltd  
melbourne | vietnam  
level 4 136 exhibition st  
melbourne vic 3000  
t 61 3 9654 8844 f 61 3 9654 8088  
e info@hansen-online.com.au  
w hansen-online.com.au