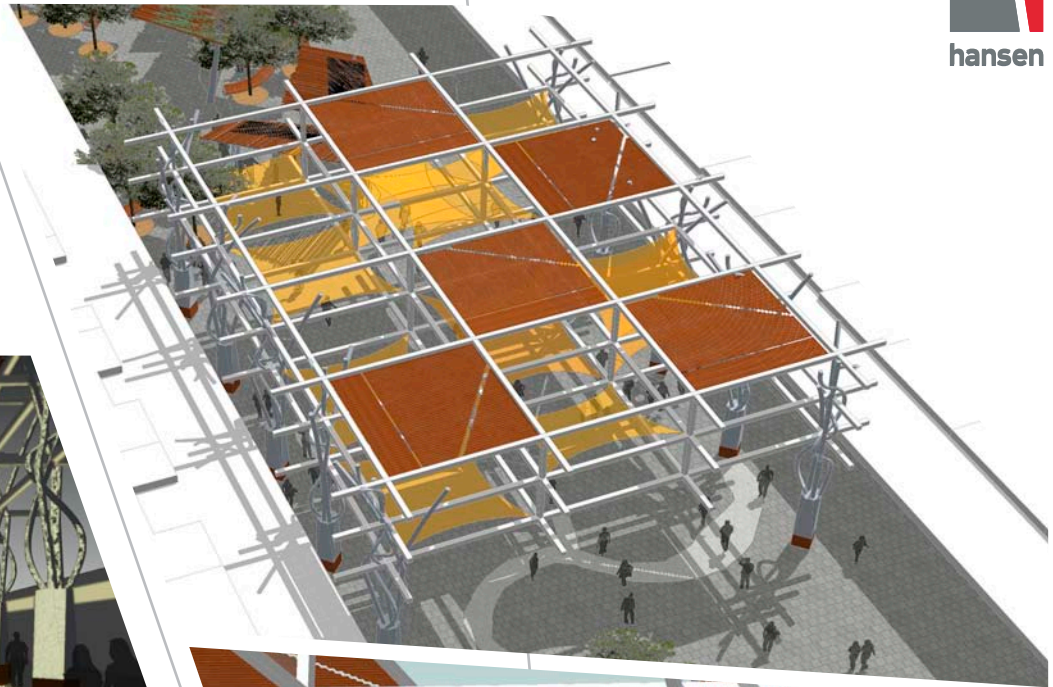


langtree mall, mildura



client:
Mildura Rural City Council

project team:
hansen partnership



project description:

hansen was engaged by Mildura Rural City Council in early 2008 to undertake community consultation and prepare a detailed concept design for the Langtree Mall in Mildura.

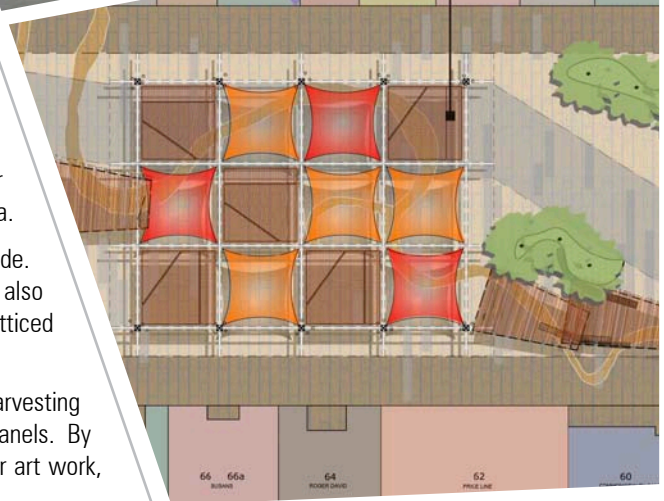
In 2007 the Mildura CBD Plan was prepared to guide the future direction of the built form and public spaces within Mildura. One of the recommendations of that plan was to redesign and upgrade the main pedestrian mall in Mildura. Several community consultation sessions were held in Mildura to gain an understanding of the key issues and flesh out design concepts.

The design was developed utilising inspiration from the Mildura region and in particular, site visits by plane. An aerial view of the Murray River is inscribed onto the pavement and winds its way through the length of the mall. Just as people and townships are attracted to the river, elements such as shelters and furniture hug the edge of the river alignment through the mall. The pavement pattern itself is also an interpretation of an aerial view of Mildura and its agricultural patchwork.

A key component of the redesign of the mall was to open up the ends of the mall and clear out the existing clutter. Existing buildings within the mall will be converted to smaller kiosk pods, enabling businesses to embrace the al fresco lifestyle which appeals to Mildura.

Given Mildura's wealth of sunshine, the design aims to maximise the effect of sun and shade. A series of 'solar pergolas' provide sheltered areas along the river alignment, whilst also harnessing the sun's energy through solar panels. A large multi-use pavilion creates latticed shade patterns in the centre of the mall, effectively becoming the heart of Mildura's CBD.

The new mall will become a model for sustainability in Mildura by incorporating water harvesting techniques, recycling materials and putting energy back into the grid with solar panels. By incorporating a range of multi-use spaces scattered along the spine of the Murray River art work, **hansen** has breathed new life into one of Mildura's key public spaces.



urban planning urban design landscape architecture

hansen partnership pty ltd
melbourne | vietnam
level 4 136 exhibition st
melbourne vic 3000
t 61 3 9654 8844 f 61 3 9654 8088
e info@hansen-online.com.au
w hansen-online.com.au