

# ringwood public domain and landscape guidelines



client:  
Maroondah City Council

project team:  
hansen partnership

**project description:**

The aim of the Ringwood Transit City Public Domain and Landscape Guidelines is to set the framework for the supply, installation and management of street furniture, fittings and detail in order to make Ringwood's public domain:

- More appealing to locals and visitors alike; and
- More functional and accessible for pedestrians and people with mobility impairments;

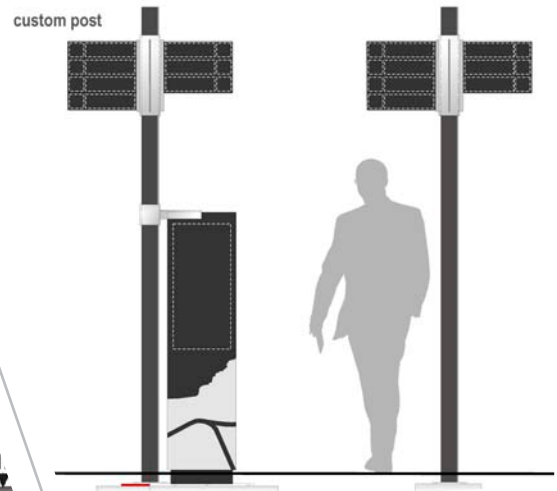
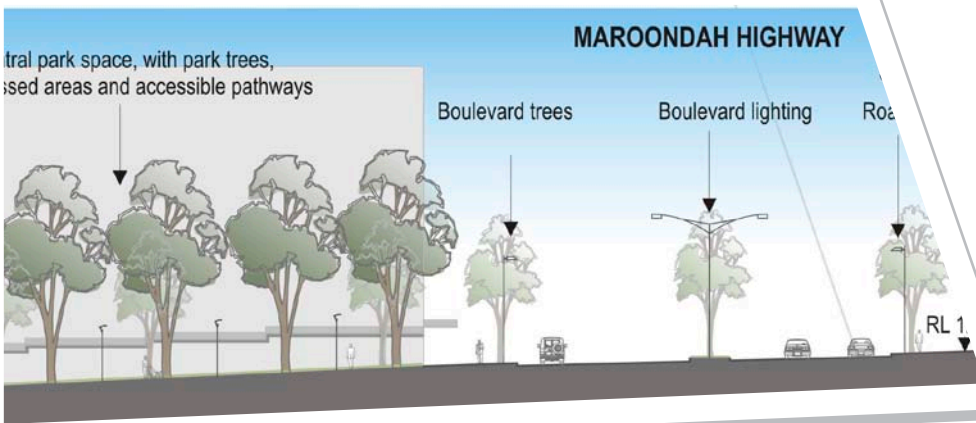
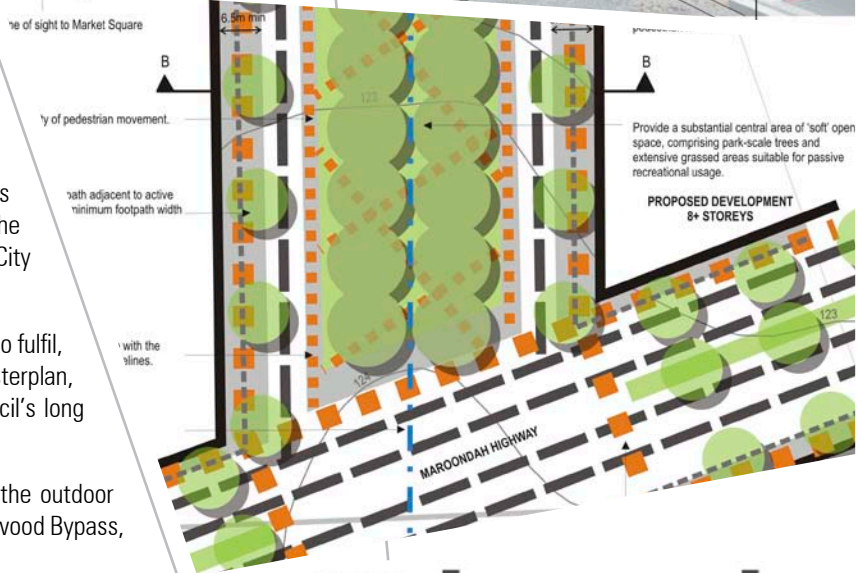
thus enabling streets and public spaces to be lively places where people can engage with others in the community.

The Ringwood Transit City Public Domain and Landscape Guidelines will provide a means of establishing consistency and improving the overall quality, appearance and amenity of the Ringwood Transit City public domain.

The Guidelines have been prepared in accordance with, and in order to fulfil, the relevant aims of the Ringwood Transit City Urban Design Masterplan, Maroondah City Council's Council Plan and Maroondah 2025: Council's long term strategic vision document.

The Public Domain and Landscape Guidelines apply to all areas of the outdoor public domain within the Ringwood Transit City, bounded by the Ringwood Bypass, the Lilydale railway line and Station St and Eastlink.

It is intended that these Guidelines remain current until the year 2020, but they may be reviewed before that date.



urban planning urban design landscape architecture

hansen partnership pty ltd  
melbourne | vietnam  
level 4 136 exhibition st  
melbourne vic 3000  
t 61 3 9654 8844 f 61 3 9654 8088  
e info@hansen-online.com.au  
w hansen-online.com.au