

# wangaratta performing arts centre



## client

The Rural City of Wangaratta

## project team

Harmer Architecture

hansen partnership

John Piper Traffic Consultants

Bryce Raworth Heritage Consultants

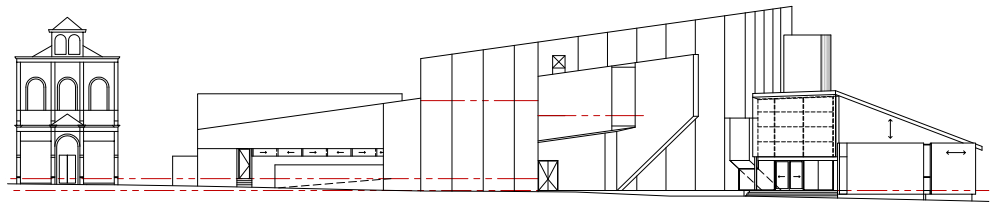
Burns Bridge Project Managers

## project description

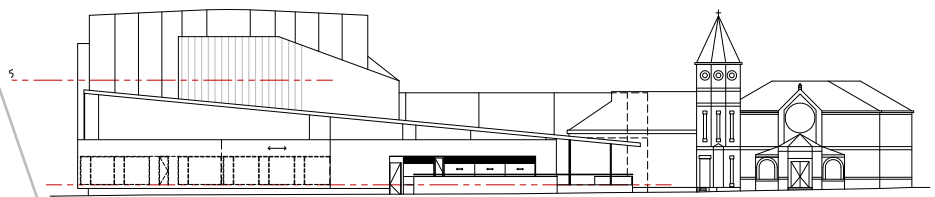
**hansen** was responsible for the preparation of a permit application to the Rural City of Wangaratta in support of the Wangaratta Performing Arts Project.

The proposal involved the demolition of a memorial town hall and theatre building to allow for the construction of a purpose built Performing Arts Centre. The new Performing Arts Centre included theatre facilities, conference areas, a function centre, restaurant/café additional car parking and landscaping.

The project was a collaborative between Harmer Architecture, **hansen**, Bryce Raworth and John Piper Traffic consultants on behalf of the Rural City of Wangaratta.



east elevation - Ford street



north elevation - Ovens street



urban planning urban design landscape architecture

hansen partnership pty ltd  
melbourne | vietnam  
level 4 136 exhibition st  
melbourne vic 3000  
t 61 3 9654 8844 f 61 3 9654 8088  
e [info@hansen-online.com.au](mailto:info@hansen-online.com.au)  
w [hansen-online.com.au](http://hansen-online.com.au)