

# west melbourne structure plan

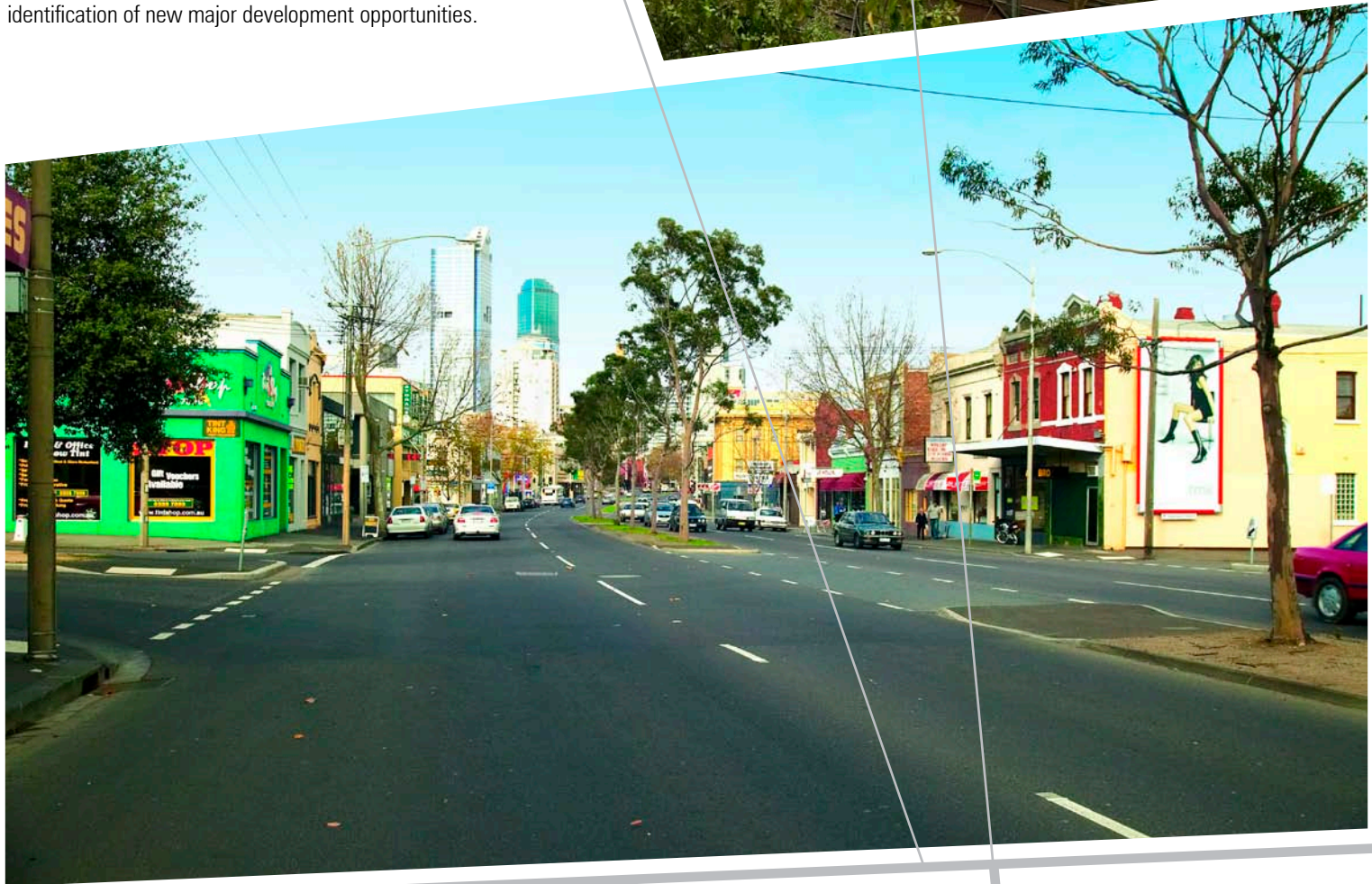


client:  
Melbourne City Council

project team:  
hansen partnership

## project description:

West Melbourne Mixed Use Structure Plan - a project for the Melbourne City Council to resolve outstanding building height and land use issues on the CAD fringe, improve the appearance and amenity of the area by the provision of streetscape works, the general greening of the area, and the provision of additional open space. The project provided clear direction on practical issues such as building height, streetscape works and opportunities for additional open space, as well as a more visionary element that addressed long term options for new links to Docklands, new arterial roads to change traffic patterns to the north of the city, public transport extensions into the area, a new local activity centre, and the identification of new major development opportunities.



urban planning urban design landscape architecture

hansen partnership pty ltd  
melbourne | vietnam  
level 4 136 exhibition st  
melbourne vic 3000  
t 61 3 9654 8844 f 61 3 9654 8088  
e [info@hansen-online.com.au](mailto:info@hansen-online.com.au)  
w [hansen-online.com.au](http://hansen-online.com.au)